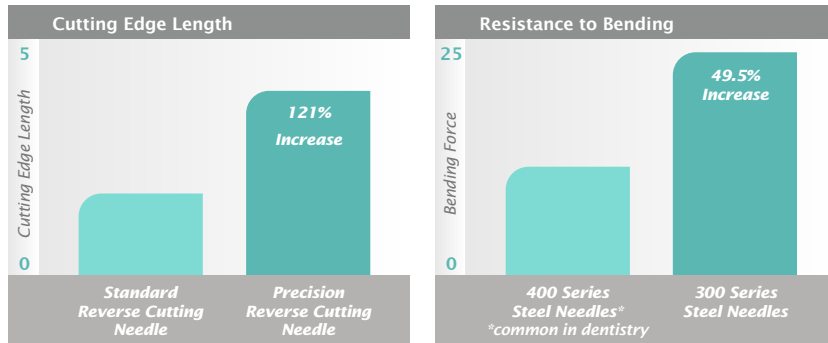


**The soft monofilament**

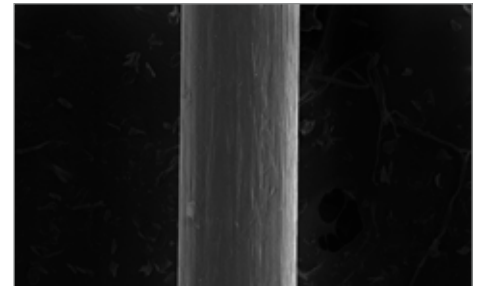
- ▶ Non-wicking monofilament construction
- ▶ Soft and comfortable for patients
- ▶ 300 Series Stainless Steel Needles



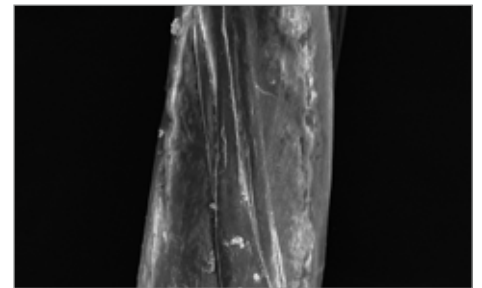
**Available Sizes**

CS0618RC	USP 4/0	16 mm 3/8 Circle Precision Reverse Cutting needle
CS0618PREM	USP 4/0	13 mm 3/8 Circle Precision Reverse Cutting needle
CS0618PERIO	USP 4/0	13 mm 1/2 Circle Round Body Taper Point needle
CS0518	USP 3/0	16 mm 3/8 Circle Reverse Cutting needle
CS051819	USP 3/0	19 mm 3/8 Circle Reverse Cutting needle
CS0418	USP 2/0	19 mm 3/8 Circle Reverse Cutting needle

**Smooth Monofilament Rod**



**Cytoplast™ PTFE Suture**  
350x Magnification



**PTFE Suture Competitor**  
350x Magnification

