

# Cytoplast™ RTM Collagen

Type 1 bovine collagen membrane



shown actual size.



15 mm x 20 mm

RTM1520 (2 membranes per box)



20 mm x 30 mm

RTM2030 (2 membranes per box)



30 mm x 40 mm

RTM3040 (2 membranes per box)

## Features & Benefits

**Manufactured from highly purified type 1 bovine achilles tendon**

Safe for the patient

**26 – 38 week resorption time**

Long predictable resorption time limits the risk of particle loss due to premature resorption

**High tensile strength**

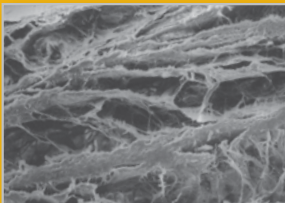
You can suture or tack the membrane in place without tearing

**Cell occlusive**

Prevents epithelial down growth

**Optimized flexibility**

Stiff enough for easy placement, yet easily drapes over ridge



Multi-layer construction allows tissue integration into outer layer, while preventing direct passage of bacteria and epithelial cells.

“...I am impressed with its *handling*, but most importantly, I am impressed with its *results*.”

*Jerald Rosenberg, DMD; Periodontist*